



A COMPARATIVE STUDY OF SIMPLE AND COMPLEX ART INTERPRETATIONS IN LINKED OPEN DATA USING ICON ONTOLOGY

Bruno Sartini, Ludwig Maximilians
University of Munich

Sofia Baroncini, University of Bologna

TABLE OF CONTENTS

1

Introduction and
background, and
research aim

2

Two motivating
scenarios

3

Ontology
extension

4

Examples
description

5

Conclusions

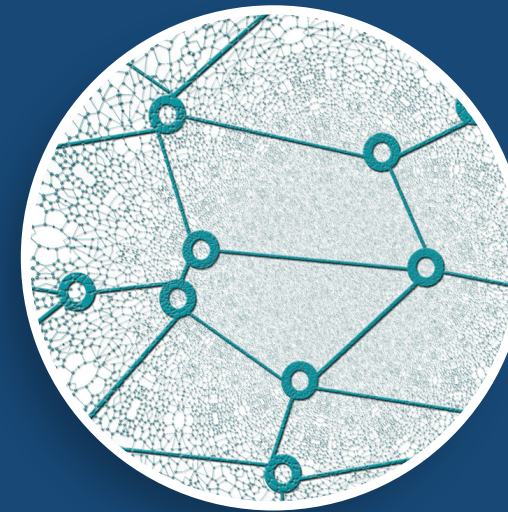
INTRODUCTION



Iconography and iconology

Iconography focuses on subject recognition and comprehension.

Iconology concerns the understanding of iconographic subjects as documents of socio-cultural phenomena.



Semantic web

Semantic Web technologies offer an opportunity to formalize complex statements on this domain

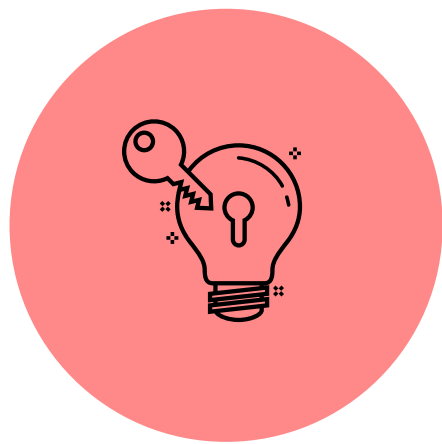
PANOFSKY'S INTERPRETATION ACT



Level 1
Natural elements (e.g. actions, people, objects) and expressional qualities (e.g. emotions)



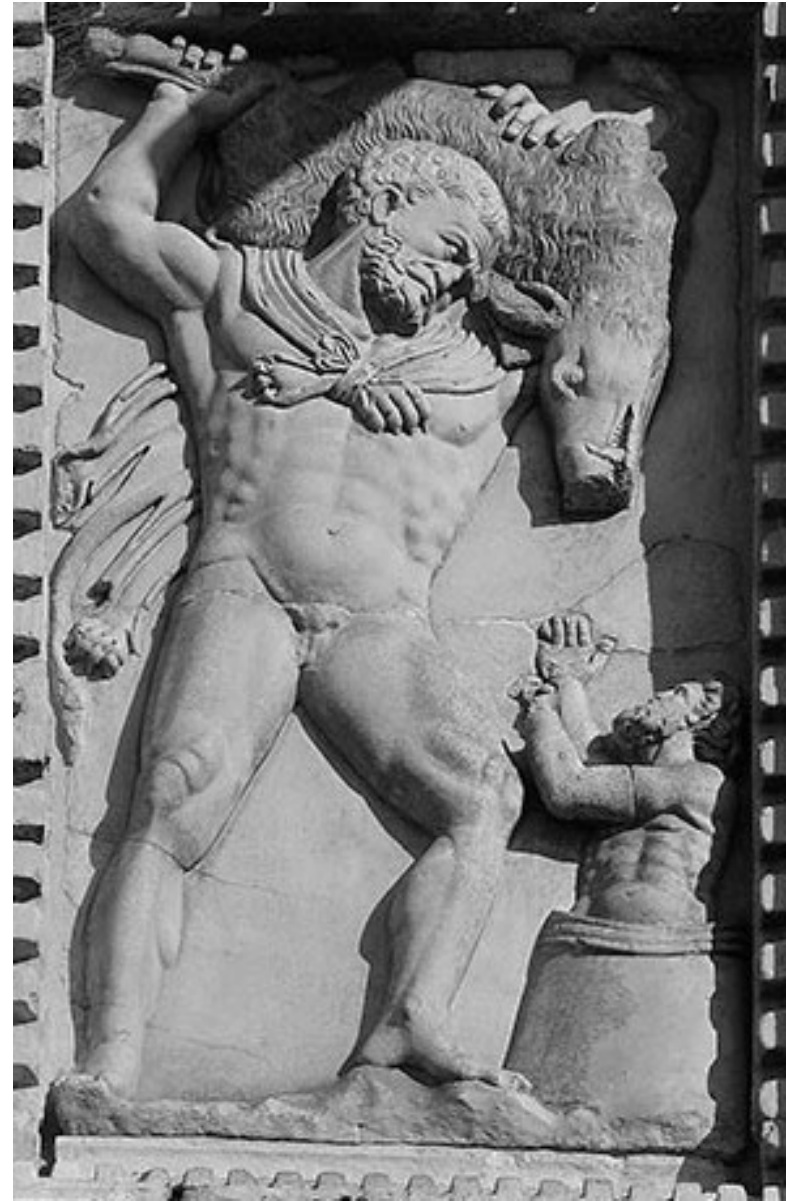
Level 2
Characters, themes, stories, allegories, symbols, etc.



Level 3
Cultural phenomena, attitude of a person or of the time

E. Panofsky, F. Saxl, Classical mythology in mediaeval art, Metrop. Mus. Stud. 4 (1933) 228–280

Hercules carrying the Erymanthian Boar, III Century, Venice, St. Mark's Basilica, external wall



Allegory of Salvation, XIII Century, Venice, St. Mark's Basilica, external wall



mediaeval Western art was unable to retain a classical prototype without destroying its original meaning.

ICON ONTOLOGY

<https://w3id.org/icon/docs/>

*Subject
manifested in the
specific artwork
considered*

*Subjects as
described by
vocabularies*

Recognition

*Pre-Iconographical
Recognition*



*Artistic motif or
Composition*



Level 1 subject

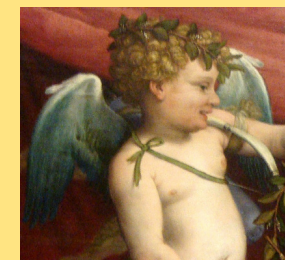


1:1

*Iconographical
Recognition*



Image



Level 2 subject



1:1

*Iconological
Recognition*

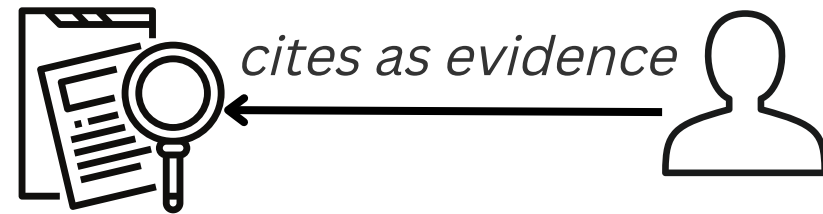


*Intrinsic
meaning*

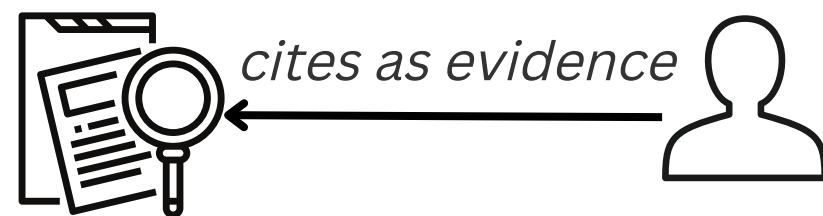


Level 3 Subject

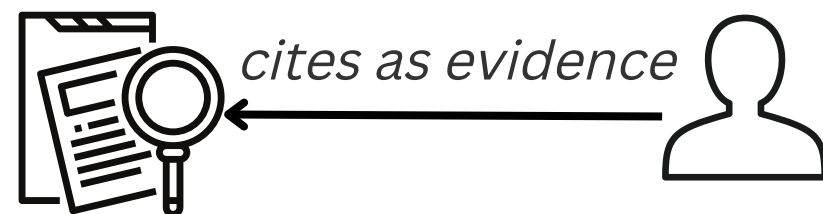
1:1



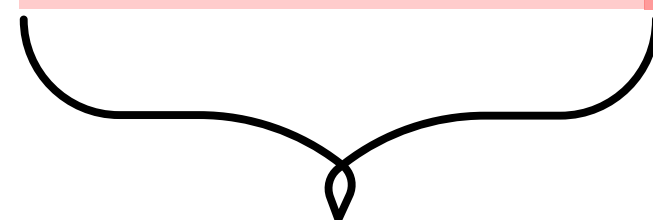
carried out by



carried out by



carried out by



Interpretation

B. Sartini, S. Baroncini, M. van Erp, F. Tomasi, A. Gangemi, *Icon: An ontology for comprehensive artistic interpretations*, *J. Comput. Cult. Herit.* 16 (2023). doi:10.1145/3594724

RESEARCH AIMS AND APPROACH

Problem

ICON ontology only allows fully described interpretations of artworks

Aims

- Avoid redundant triples created by N-ary relationships when not needed*
- Improve efficiency in information retrieval*

Approach

- Identifying concrete examples of issues through two motivating scenarios*
- Extending the ontology by adding property chains*
- Testing the extended ontology by describing two examples from the motivating scenarios*

TWO SCENARIOS

- *Free text subject description in artworks catalogue entries*
- *Art historians' interpretations*

SCENARIO 1

Free text subject description in artwork catalogue entries

Subject description with no further indications on

- *information provenance*
- *how the subjects relate with each other*
- *alternative interpretations*

Requirement. *Simple subject description and retrieval*

Example: Hohenstein Adolf, *Manifest with walking allegorical figures*, century XIX (extracted from ArCo (Carriero et. al., 2019))
<https://w3id.org/arco/resource/HistoricOrArtisticProperty/0500671662>



"Iconographic reading: *male figures; female figures; allegorical figures; Work; Art; Sculpture; Painting; Music; trumpet; standard; palm branch; laurel branch; hammer, palette; brushes; lira; work tools; heraldic crests; shield.* **Merchandise category/Type of event.** *cultural events; celebrations; the fiftieth anniversary of the statute.* **Names:** *50th Anniversary of the Albertine Statute.* **Places:** *Turin*"*

**authors' English translation*

SCENARIO 2

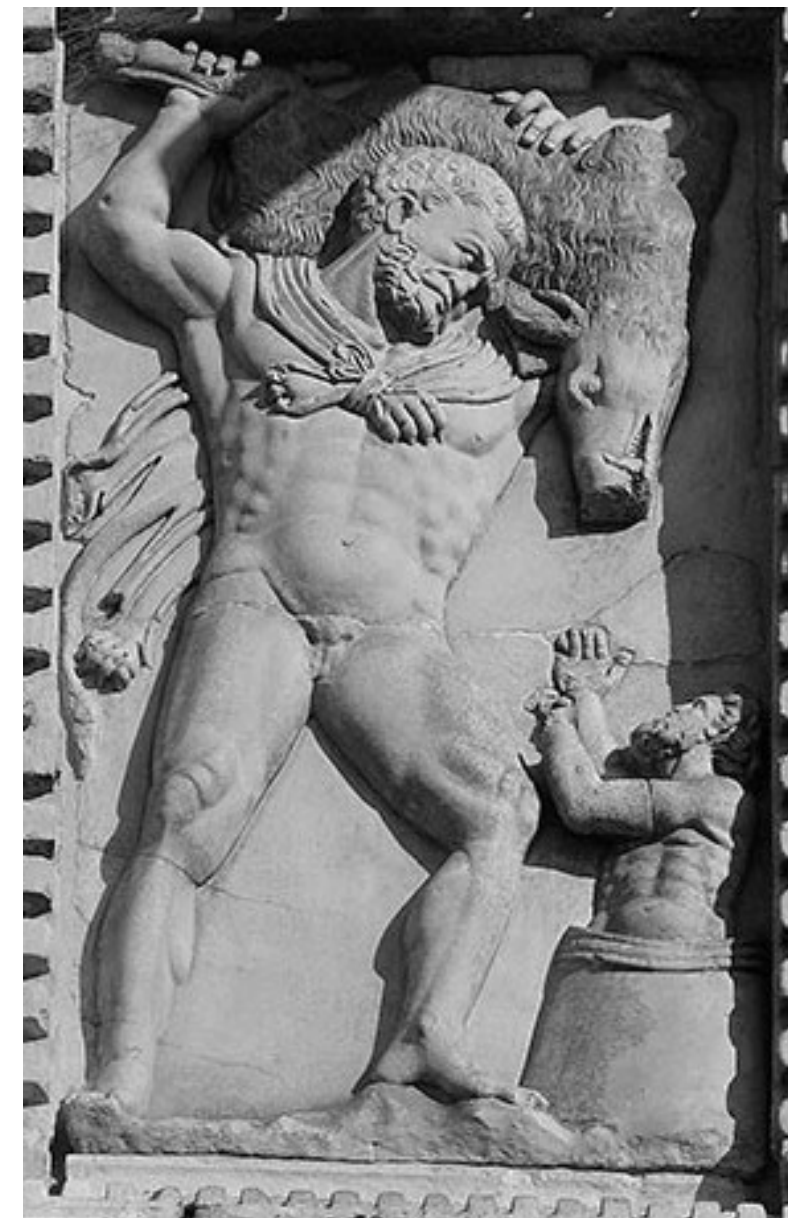
Art historians' interpretations

Subject description with indications on

- *information provenance*
- *how the subjects relate with each other*

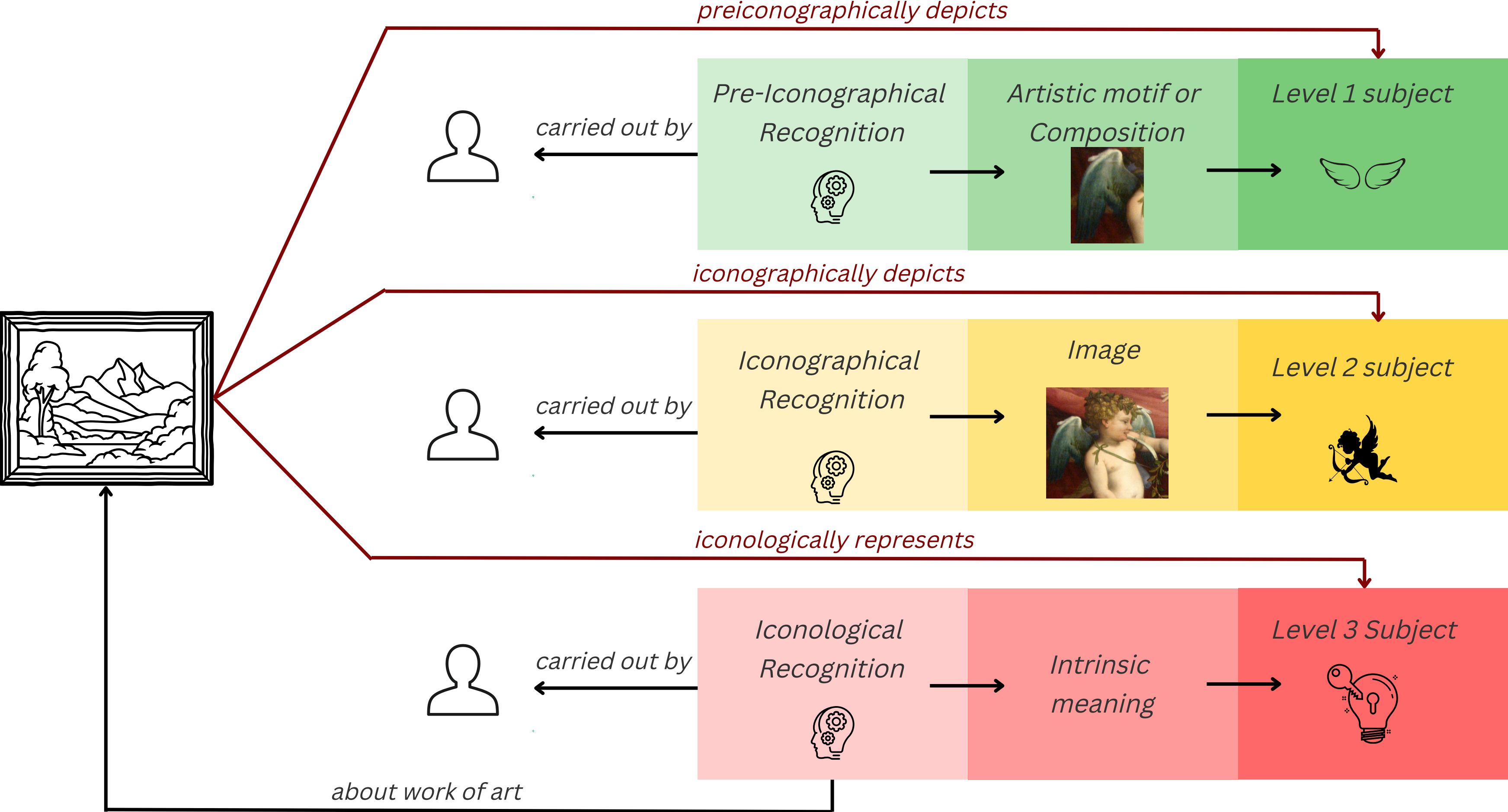
Requirement. *Thorough description, simple core subject retrieval*

Example: *Hercules carrying the Erymanthian Boar, III Century; Allegory of Salvation, c. XIII A.D. Venice, St. Mark's Basilica (extracted from the Iconology dataset (Baroncini et. al, 2023))*



«[...] an antique relief of Hercules could not be imitated without changing its mythological subject (figs. 4, 5). The lion's skin was replaced by a **fluttering drapery**, the boar became a **stag**, the **terrified Euristheus** was left out, and the hero was made to stand upon a vanquished **dragon**. As the **human soul was often symbolized by a stag**, the result of these changes was that the classical hero had been transformed into the **Saviour conquering evil and saving the souls of the Faithful**. From this example we learn that **mediaeval Western art was unable, or, what comes to the same thing, was unwilling, to retain a classical prototype without destroying either its original form, or, as here, its original meaning.**» (Panofsky and Saxl, 1933, p.228)

ICON EXTENSION



PROPERTY CHAINS

Description: Pre-iconographically Depicts

Description: Iconographically Depicts

?

SuperProperty Of (Chain) +

- 'Has Recognition' o 'Recognized Composition' o 'Has Part (ICON)' o 'Has Expressional Meaning' SubPropertyOf: 'Pre-iconographically Depicts'
- 'Has Recognition' o 'Recognized Artistic Motif' o 'Has Expressional Meaning' SubPropertyOf: 'Pre-iconographically Depicts'
- 'Has Recognition' o 'Recognized Composition' o 'Has Part (ICON)' o 'P138 represents' SubPropertyOf: 'Pre-iconographically Depicts'
- 'Has Recognition' o 'Recognized Artistic Motif' o 'Has Factual Meaning' SubPropertyOf: 'Pre-iconographically Depicts'
- 'Has Recognition' o 'Recognized Composition' o 'Has Part (ICON)' o 'Has Factual Meaning' SubPropertyOf: 'Pre-iconographically Depicts'
- 'Has Recognition' o 'Recognized Artistic Motif' o 'P138 represents' SubPropertyOf: 'Pre-iconographically Depicts'

- 'Has Recognition' o 'Recognized Image' o 'Has Character' SubPropertyOf: 'Iconographically Depicts'
- 'Has Recognition' o 'Recognized Image' o 'Has Personification' SubPropertyOf: 'Iconographically Depicts'
- 'Has Recognition' o 'Recognized Image' o 'Has Event' SubPropertyOf: 'Iconographically Depicts'
- 'Has Recognition' o 'Recognized Image' o 'Has Place' SubPropertyOf: 'Iconographically Depicts'
- 'Has Recognition' o 'Recognized Image' o 'Has Symbol' SubPropertyOf: 'Iconographically Depicts'
- 'Has Recognition' o 'Recognized Invenzione' SubPropertyOf: 'Iconographically Depicts'
- 'Has Recognition' o 'Recognized Image' o 'Has Named Object' SubPropertyOf: 'Iconographically Depicts'
- 'Has Recognition' o 'Recognized Invenzione' o 'Composed Of' SubPropertyOf: 'Iconographically Depicts'

Description: Iconologically Represents

?

SuperProperty Of (Chain) +

- 'Has Recognition' o 'Recognized Intrinsic Meaning' o 'Recognized Cultural Phenomenon' SubPropertyOf: 'Iconologically Represents'
- 'Has Recognition' o 'Recognized Intrinsic Meaning' o 'Recognized Concept' SubPropertyOf: 'Iconologically Represents'

EXAMPLES

DESCRIPTIONS

Scenario 1

```
@prefix icon: <https://w3id.org/icon/ontology/> .  
@prefix arco-p: <https://w3id.org/arco/resource/  
HistoricOrArtisticProperty/> .  
@prefix ex: <https://example.org/>
```

```
arco-p:0500671662 icon:preiconographicallyDepicts ex:male-figures,  
ex:female-figures, ex:standard, ex:palm-branch, ex:laurel-branch,  
ex:hammer, ex:palette, ex:brushes, ex:lira, ex:work-tools,  
ex:heraldic-crests, ex:shield,  
ex:50th-anniversary-of-the-albertine-statute;  
    icon:iconographicallyDepicts ex:allegorical-figures, ex:Work,  
    ex:Art, ex:Sculpture, ex:Painting, ex:Music;  
    icon:iconologicallyRepresents ex:cultural-events, ex:celebrations,  
    ex:the-fiftieth-anniversary-of-the-statute.
```



Subjects fully described by
property chains
no further interpretation
description
simple subject description

Scenario 2

Subjects partially described with
property chains
Further thorough interpretation
description



simple subject retrieval of
complex interpretations

```
@prefix d: <https://w3id.org/icon/data/>
```

```
d:ART1004 icon:preiconographicallyDepicts d:carrying-on-shoulders,  
d:stepping-on, d:man, d:cloth, d:deer, d:dragoon;  
    icon:iconographicallyDepicts d:deer-souls,  
    d:carrying-on-shoulders-saving-souls,  
    d:stepping-on-defeating-devil, d:dragoon-devil;  
    icon:iconologicallyRepresents d:CF1181.
```

```
d:CF1181 rdfs:label "Medieval Western art was unable to retain a  
classical prototype without destroying its original meaning".
```

SPARQL QUERY OPTIMISATION

Query: retrieve all the recognised subjects at each level of interpretation

```
SELECT DISTINCT ?subj1 ?subj2 ?subj3 WHERE {
  VALUES ?rel {icon:hasCharacter icon:hasEvent icon:hasNamedObject icon:hasPlace icon:hasPersonification icon:hasSymbol}

  d:ART1004 ^icon:aboutWorkOfArt ?rec.
  {?rec icon:recognizedArtisticMotif /
   (icon:hasFactualMeaning | icon:hasExpressionalMeaning | crm:P138_represents) ?subj1.
  }

  UNION
  {?rec icon:recognizedComposition / icon:hasPart / (icon:hasFactualMeaning | icon:hasExpressionalMeaning | crm:P138_represents) ?subj1.
  }
  UNION
  {?rec icon:recognizedImage ?img.
   ?img ?rel ?subj2.
  }
  UNION
  {?rec icon:recognizedInvenzione ?subj2
  }
  UNION
  {?rec icon:recognizedIntrinsicMeaning / (icon:recognizedConcept | icon:recognizedCulturalPhenomenon) ?subj3.
  }
}
```

Previous
ontology version

VS

```
PREFIX d: <https://w3id.org/icon/data/>
PREFIX icon: <https://w3id.org/icon/ontology/>
```

```
SELECT DISTINCT ?subj1 ?subj2 ?subj3 WHERE {
  VALUES ?art {d:ART1004}
  {?art icon:preiconographicallyDepicts ?subj1
  } UNION
  ?art icon:iconographicallyDepicts ?subj2
  } UNION
  ?art icon:iconologicallyRepresents ?subj3
  }
}
```

Last ontology
version

VERSION COMPARISON

Requirement	Motivating scenario	ICON 1.0	ICON2.0
Simple subject description	Scenario 1		✓
Core subjects direct retrieval	Scenario 1, 2		✓
Thorough subject description	Scenario 2	✓	✓

CONCLUSIONS

The extended version of ICON ontology introduces three new properties aimed at directly identifying the depicted subjects according to the level of interpretation. This allow us to:

- provide simple descriptions of subjects at each level of interpretation, avoiding verbose descriptions
- improve efficiency in information retrieval of complex interpretation descriptions by querying the core subjects through the property chains

Limitations:

- Quality features of recognized subjects cannot be captured by the property chains

THANK YOU
ANY
QUESTIONS?

Bruno Sartini: b.sartini@lmu.de

Sofia Baroncini: sofia.baroncini4@unibo.it

REFERENCES



- S. Baroncini, M. Daquino, F. Tomasi, Exploring iconographical and iconological content in semantic data through art historians' interpretations, in: La memoria digitale. Forme del testo e organizzazione della conoscenza. Atti del XII convegno annuale AIUCD, Siena, 2023, pp. 9–14
- V. A. Carriero, A. Gangemi, M. L. Mancinelli, L. Marinucci, A. G. Nuzzolese, V. Presutti, C. Veninata, Arco: The italian cultural heritage knowledge graph, in: C. Ghidini, O. Hartig, M. Maleshkova, V. Svátek, I. Cruz, A. Hogan, J. Song, M. Lefrançois, F. Gandon (Eds.), The Semantic Web – ISWC 2019, Springer International Publishing, Cham, 2019, pp. 36–52
- E. Panofsky, Meaning in the visual art : papers in and on art history, Doubleday Anchor book, 59, Anchor Books, New York, 1955
- E. Panofsky, F. Saxl, Classical mythology in mediaeval art, Metrop. Mus. Stud. 4 (1933) 228–280
- B. Sartini, S. Baroncini, M. van Erp, F. Tomasi, A. Gangemi, Icon: An ontology for comprehensive artistic interpretations, J. Comput. Cult. Herit. 16 (2023).
doi:10.1145/3594724